

NEWSNOTE

VOLUME 1, ISSUE 2 SEPTEMBER 15, 2021

FROM THE PRINCIPAL'S DESK...

Happy Wednesday!

We are making it through our first full week of school!

Thank you for your patience and support as we navigate another unique school year.

With trying to limit any possible exposure to COVID in the building, if your child is sick, please keep them home. Remember, "When in doubt, keep them out." Thank you. Our school nurse will follow up with you.

Thursday evening, September 23rd, is our virtual Meet the Teacher Night. You will receive a Zoom or Google Meets invite from your child's teacher. If you do not receive one by the 23rd, please let me know. Please log onto the sessions and meet your child's teacher and learn about what is going on in their classrooms.

Have a great week!

God's Peace and Love,
Mrs. Kwitowski



EVENT UPDATES

As per our re-opening plan, we are keeping visitors to a minimum until further notice. That being said please make note of the following event updates:

- ◇ Room Parent Social - *Cancelled*: If we are able to reestablish the need for room parents / point of contact parents for this school year we will reach out with information.
- ◇ Meet the Teacher Night - *Virtual*: See message from Mrs. Kwitowski.
- ◇ Book Fair - In person for students. Volunteers will be limited & will be required to show proof of C-19 vaccination.
- ◇ Parent/Teacher Conferences - *Virtual* - More information to follow.



UPCOMING EVENTS:

- **9/20** - Fall Picture Day (PK-4 - Gr. 8)
- **9/21** - Fall Picture Day (PK-3 & absences)
- **10/1 - 15 Minute Early Release Drill**
- **10/1** - Christian Witness Mass, 8:30am
- **10/8 - NO SCHOOL**: Staff PD
- **10/11 - NO SCHOOL**: Columbus Day
- **10/20** - Picture Retake Day
- **10/27** - Progress Report Upload: K-8
- **11/5** - Christian Witness Mass, 8:30am
- **11/11 - NO SCHOOL**: Veterans Day
- **11/12 - 10:45 Early Dismissal**: P/T Conferences

BY THE NUMBERS

In this section we will talk about the numbers of our fundraisers; the good, the bad and the most up to date as possible!

See the flyer coming home today regarding fundraisers that we will have throughout the school year.

We offer a wide variety of opportunities to support SME. We understand that every fundraiser will not be for everyone, but we do appreciate any & all support you can give!

Our candy bar sale will begin soon! Be on the look out for our electronic order form. We sell Gertrude Hawk Chocolate Bars and the options are all delicious!

We also participate with Boxtops 4 Education. See the flyer attached electronically today for more information!



FALL BOOKFAIR

We are excited to announce that the Scholastic Book Fair is back!

After months without beloved school traditions, our upcoming Book Fair will be a familiar and welcome celebration.

Here's what you need to know about our upcoming fair:

- Every dollar you spend will benefit our school directly
- You can sign up for Book Fair eWallet, a convenient digital payment account, so your child can shop the Fair cash-free. Grandparents, friends, and others can contribute to the eWallet to help build your home library.
- We're taking precautions to host a safe Fair at our school, focusing on preventive measures.

Save these dates and view our school's Fair site:

Fair Dates: Thursday September 23rd and Friday September 24th. Book Fair Homepage: <https://tinyurl.com/SMEFallBookfair>

Volunteers are crucial to the success of this event. We hope that you can offer your time and talents to help students discover the power of books to bring us together. The book fair will be from 8:30-1:00 both days. Please email kristenakjohnson@gmail.com or jennifersparmo@gmail.com if you can volunteer.

We can't wait to see your child at the Fair!
Jenny Sparmo and Kristen Johnson - *Book Fair Chairs*

PE UNIFORMS

We are excited to announce that effective today, our PE ordering has moved to an online store! The store will be open until 9/28. You have the option to ship your items to SME (free delivery) or direct to you (shipping charges will occur). Orders are expected 7-10 days after the close of the store. As we await the arrival of new orders, your child(ren) can wear plain navy blue/black shorts and a plain navy/white t-shirt to gym class. Once we know that all orders have been distributed, failure to adhere to the uniform policy will result in uniform infractions.

<http://sm-gym.allstarsgear.com/>

Any orders received up until this point have been either filled (if your order could be filled in its entirety) or returned (if we were not able to fill it completely).

FALL PICTURE DAY

Fall picture day is scheduled for

Monday, 9/20 (Grades PK-4 & K-8) and Tuesday, 9/21 (PK-3)

Students are allowed to dress up on picture day, but should always adhere to the dress code outlined in the uniform policy.

Inter-State Photography has shifted to online ordering!

Order online at

inter-state.com/order/60065DA

EXTRA, EXTRA! READ ALL ABOUT IT!

With the start of a new year, there is much to share!

Please take a moment to go through today's Communication Packet as you don't want to miss a thing!

A quick scroll through your electronic version is also recommended each week as we may attach information electronically rather than printing (to save as many trees as possible!).



INSIDE THIS ISSUE:

PRINCIPALS DESK	1
BY THE NUMBERS	1
FALL BOOKFAIR	1
PE UNIFORMS	1
PICTURE DAY	1
READ ALL ABOUT IT	1
SCRIP	2
CALENDAR	2
12 DAYS OF X-MAS	2
ABC'S OF SME	2
S-O-S	2
VOLUNTEER	2
SAFETY DRILLS	2
SME GEAR	2
FRIDAY MASS	2
PARENT PORTAL	2
HSA (HOME SCHOOL ASSOC.)	2
8TH GRADE INFO	
STAY IN THE KNOW	



ST. MARY'S ELEMENTARY SCHOOL

2 St. Mary's Hill
Lancaster, NY 14086

Phone: 716-683-2112
Fax: 716-683-2134
www.smeschool.com



UPON THIS HILL,
WE DO GOD'S WILL



SCRIP

Next week, each family will receive a Scrip information packet. After reviewing it, please do not hesitate to reach out to us with any questions. The brown envelope is what you can use to send your orders in to school with your child, and what your gift cards will be sent home to you in.



Be sure to enroll in online payments (PrestoPay) to receive your eGift cards and reloads to your physical gift cards faster, and to download the Raise Right Fundraising app! Great Lakes is now also accepting credit cards as payment (**for online orders only!**)

There is a locked box in the church foyer and outside the main school office so that you can drop off orders whenever it is convenient for you!

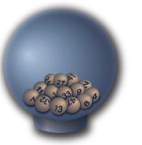
If you have any questions, please email us at scrip@smeschool.com. Thank you for your support of the Scrip program!

Mary Kate DeMarzio & Joe Magiera
Scrip Coordinators

CALENDAR CLUB

Renewals of the 2021 Calendar Club for 2022 will run through October 1st, and then sales will open up for new customers.

Please watch the NewsNotes for more information, or contact Jessica Kulpit at jesskulpit@gmail.com.

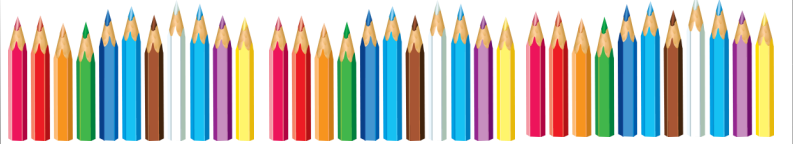


12 DAYS OF CHRISTMAS

Tickets are \$30 each, or 3/\$75 and will be sold November-December. Daily cash prizes will be awarded December 25, 2021-January 5, 2022. Volunteers are needed to prepare the mailing in October (can be done from home).



Watch the NewsNotes for more information, or contact the chairs: Amanda Barton & Jenny Sparmo at Jennifersparmo@gmail.com, or (716) 713-0719.



ABC'S OF SME

Attached electronically today you will find an updated copy of the our helpful reference, the ABC's of SME.

Hard copies are available in the school office, and can be sent home upon request if you are unable to print it out by contacting Mrs. Kuhn.

We hope that this is a valuable tool to answer any questions you may have during the course of the school year.

As always, should you need any assistance please feel free to contact your school office personnel.



S-O-S (SUPPORT OUR SCHOOL)



Active involvement of all of our families is necessary to keep school expenses to a minimum, encourage community involvement, and assure continued success of our school.

We hope to promote the true spirit of participation and volunteerism by inviting you to get involved!

We have included a list of the events and fundraisers that we plan to hold throughout the year at St. Mary's in this week's NewsNotes. Please save this sheet so that you have quick access to the information that you need. Events and their details are subject to change as we move through the year, and regular updates will be posted in the NewsNotes, church bulletin, on Facebook and the school & church websites.

If you are interested in helping out with any of the events listed, please reach out to the specific event chair (if provided), or our Events Coordinator, Mary Kate DeMarzio at marykate@stmarysonthehill.org.

Your involvement is vital to the success of these events!

VOLUNTEER NEEDED

Are you a parent / grandparent with a few hours to spare during the lunch hour?

We are looking to add a volunteer to our lunch monitor crew. If you are interested please contact Mrs. Kuhn (secretary@smeschool.com) for more information! Proof of vaccination is required.

SAFETY DRILLS

As is required by law, we will be participating in both fire & lockdown drills while the weather cooperates.



We will work to ensure that the students are able to vacate the building in a quick & safe manner while still observing COVID gathering recommendations.

SME GEAR STORE

We will be opening our SME Gear store in October!

This online store will include:

- 1/4 zip tech shirts (uniform approved, cold weather apparel)
- Hoodies (uniform approved, cold weather apparel)
- Long sleeve t-shirts (not to be worn as a uniform top)
- Baseball Caps
- Winter Knit caps & masks!

Keep your eye out for the link to the store in the 10/6 NewsNote!

HOME SCHOOL ASSOCIATION (PTA)



The Home School Association (our PTA) is a vital group of volunteers who work to ensure the positive growth of our school community.

The HSA team will host a variety of fundraisers throughout the school year. Each fundraiser benefits the school and students directly.

If you are interested in joining our team of HSA volunteers, please contact Kristie May (hsa@smeschool.com).

FRIDAY MASS

Each Friday we will have 1/2 of our classes attend mass in the church. The rest of the students will remain in their classroom and watch mass via live stream. Students will still be participating in the celebration just as they would if they were in the Church.



We welcome all of our parents to join via live stream as well!
<https://stmarysonthehill.org/live-stream/>

8TH GRADE INFO

If your child plans on attending a catholic high school next year you will need to complete the online application:
https://catholicshwny.smapply.io/prog/application_for_admission_grade_9/

Please be sure to print and sign the confirmation email you receive upon completion and submit to the main office. Without this signed document, we are unable to submit a copy of your child's 1st report card to their 1st & 2nd choice catholic high schools.



Please take a scroll through our electronic version of the NewsNote for information & flyers from area high schools.

PARENT PORTAL

Parent Portal accounts have been created for all new families Kindergarten - Grade 8.

Please refer to the email you received and follow the directions within it.

If you have any questions, please contact Mrs. Nancy Jezuit whose contact information is also included in that email.

STAY IN THE KNOW



Save the Date: 9/24 Due Date: P/S Handbook Sign-Off Page

Save the Date: 9/24 Due Date: Walkabout Permission Slip

Save the Date: 10/1 15min Early Release Drill

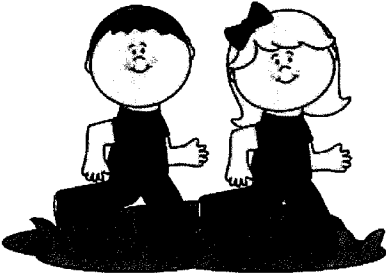
Save the Date: 10/8 No School

Save the Date: 10/11 No School

Save the Date: 10/20 Fall Picture Re-Take Day

2021-2022

SME Walkabout General Permission Slip



Dear SME Families,

An important part of our school life includes walks on and around the school grounds, exploration of the St. Mary's Cemetery, SME walk-a-thons, walks to the church, and various other learning activities that take place outdoors on and around the school grounds. Students are always supervised on outdoor excursions and during outdoor activities. Please sign and return the permission slip no later than Friday, September 24, 2021, indicating that your child has permission to participate in all outdoor activities that take place on and around SME school grounds.

Sincerely,

Mrs. Kwitowski
Principal

KK

2021-2022 SME Walkabout General Permission Slip
Please Return By Friday, September 24, 2021

My child/children has/have my permission to participate in all outdoor activities that take place on and around SME school grounds including the SME Walk-A-Thons.

Please Print

Child's Name _____

Grade _____

Child's Name _____

Grade _____

Child's Name _____

Grade _____

Child's Name _____

Grade _____

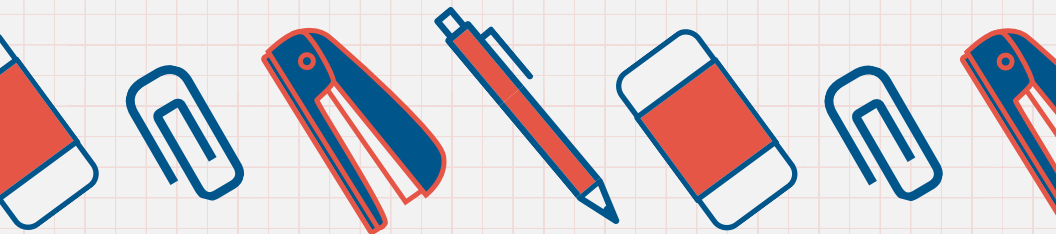
Child's Name _____

Grade _____

Parent/Guardian Signature

Date

Parent/Guardian Name (Please Print)



BOX TOPS FOR EDUCATION

HOW IT WORKS:



**BUY
BOX TOPS
PRODUCTS**



**SCAN
YOUR RECEIPT**

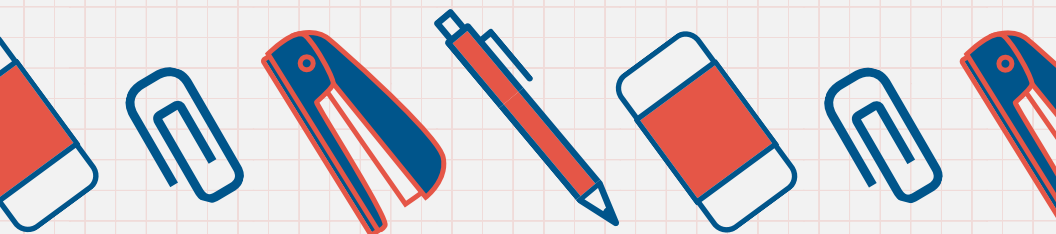


**EARN CASH
FOR YOUR
SCHOOL**

DOWNLOAD THE BOX TOPS APP TO GET STARTED!

**GREAT NEWS! IF YOU SHOP FOR GROCERIES ONLINE
OR HAVE DIGITAL RECEIPTS, YOU CAN FORWARD
YOUR EMAIL RECEIPTS TO:**

RECEIPTS@BOXTOPS4EDUCATION.COM





SCHOLASTIC

BOOK FAIRS

Books bring us together!

Dear Parents and Families:

We are excited to announce that the Scholastic Book Fair is back! After months without beloved school traditions, our upcoming Book Fair will be a familiar and welcome celebration.

Here's what you need to know about our upcoming fair:

- Every dollar you spend will benefit our school directly
- You can sign up for Book Fair eWallet, a convenient digital payment account, so your child can shop the Fair cash-free. Grandparents, friends, and others can contribute to the eWallet to help build your home library.
- We're taking precautions to host a safe Fair at our school, focusing on preventive measures.

Save these dates and view our school's Fair site:

Fair Dates: Thursday September 23rd and Friday September 24th.

Book Fair Homepage:

<https://tinyurl.com/SMEFallBookfair>

Volunteers are crucial to the success of this event. We hope that you can offer your time and talents to help students discover the power of books to bring us together. The book fair will be from 8:30-1:00 both days. Please email kristenakjohnson@gmail.com or jennifersparmo@gmail.com if you can volunteer.

We can't wait to see your child at the Fair!

Jenny Sparmo and Kristen Johnson
Book Fair Chairs

Save the Dates!

Below are some of the fundraisers and events that we plan to hold throughout the year at St. Mary's. Please save this sheet so that you have quick access to the information that you need. Events and their details are subject to change as we move through the year, and regular updates will be posted in the NewsNotes and bulletin, as well as on Facebook. If you are interested in helping out with any of the events listed, please reach out to the specific event chair (if provided), or our Events Coordinator, Mary Kate DeMarzio at marykate@stmarysonthehill.org.

Calendar Raffle 2022



Calendars are \$20 each and are sold July-December 2021. Daily cash prizes are awarded January-December of 2022, with the checks being mailed the first week of the month for the previous month (January winning checks are mailed the first week in February, etc.). Volunteers are needed to prepare the mailings in August and again in October (can be done from home).

Chair: Jessica Kulpit

Email: jesskulpit@gmail.com

Phone: (716) 254-0172

Little Caesars



Little Caesars

In October, we will be selling frozen food from Little Caesars at various prices. The pick-up will occur right before Halloween. Volunteers are needed to help at pick-up (date and time to be determined).

Chair: Home School Association

Email: hsa@smeschool.com

Football Frenzy



Tickets are \$10 each and will be sold in November. Cash prizes are delivered December 2021-January 2022. Volunteers are needed to prepare the mailing in October (can be done from home).

Chair: Needed

Email: marykate@stmarysonthehill.org

Phone: (716) 683-6445

12 Days of Christmas



Tickets are \$30 each, or 3/\$75 and will be sold November-December. Daily cash prizes will be awarded December 25, 2021-January 5, 2022. Volunteers are needed to prepare the mailing in October (can be done from home).

Chairs: Amanda Barton
& Jenny Sparmo

Email: Jennifersaprmo@gmail.com

Phone: (716) 713-0719

Rosina's Spaghetti Dinner (January 15, 2022)



Further details, such as price, time, and if it will be eat-in or take-out will be announced as we get closer. Volunteers are needed to serve the dinners and clean-up after the event.

Chair: Home School Association Email: hsa@smeschool.com

Baseball Fever (TBD)



Details of this fundraiser are still in the works. Volunteers will be needed to prepare the mailing (can be done from home).

Chair: Needed Email: marykate@stmarysonthehill.org Phone: (716) 683-6445

Mega Raffle (June 10, 2022 at 6:00)



Tickets are \$100 each and are sold February 2022-June 2022. Cash prizes and theme basket winners are awarded the night of the event. There are many volunteer opportunities available for various amounts of time (including work that can be done from home), and we also have open spots on the planning committee.

Chairs: Steve & Mary Kate DeMarzio Email: megaffle@smeschool.com Phone: (716) 253-7880

Chiavetta's Chicken Dinner Drive-thru (July 2, 2022)



Presale tickets are \$10/\$12 the day of. Volunteers are needed to check in drivers, serve the dinners, deliver the dinners to the cars, and clean-up after the event.

Chair: Needed Email: marykate@stmarysonthehill.org Phone: (716) 683-6445

Golf Tournament (July 18, 2022)



Super Raffle tickets are sold for \$5 each from March 2022-June 2022, along with options for sponsorships, participating in the tournament, and joining the golfers for dinner. Cash prizes, Super Raffles, and theme baskets are awarded during the dinner at the end of the tournament. There are many volunteer opportunities available for various amounts of time (including work that can be done from home), and we also have open spots on the planning committee.

Chair: Phil Gonser Email: pgonser@gmail.com Phone: (716) 807-5719

ABC's of SME

A	Absences	If your child will be absent, call the main office at 683-2112 by 9:00am or email the secretary & teacher(s). If you are requesting homework to be picked up at the end of the day it must be done at this time. An excuse must accompany your child on their first day back.
	After School Care	After school care is available to all students pre-k through grade 8. Registration forms were in your school registration packet, and are always available on our website or in the main office. Joining our after school care program can happen at any time as needed during the year.
	Attendance Policy	Please review this important policy in our 21-22 handbook which will be distributed in the first weeks of school and is expected to be read & the last page signed off on and returned.
B	Back to School Night*	We are hopeful to bring back our 'Back to School Night' next school year!
	Birthdays	We encourage you to celebrate your child's birthday through our cafeteria. Our kitchen offers a variety of snack options and order forms are available on the lunch menu tab of our website. Orders should be submitted a week prior to the date which you would like to celebrate.
	Building Hours	Early drop off is available from 7:00-7:30. Our doors open at 7:30. Students are tardy at 8:10. Pre-K is released at 1:50. Bus dismissal is at 2:15. Parent pick up is at 2:30. Any walker/parent pick up not dismissed by 2:45 will await your arrival in our after schoolcare program and regular rates will apply. Afterschool care runs until 6:00.
	Blue Folder Day*	Our weekly NewsNote goes home each Wednesday. In lieu of our reusable blue folders, the information will be stapled for distribution. Please take a moment to review this information each week to stay 'in the know'.
C	Calendar	Our annual calendar is distributed at the start of our school year and is always available on our website. A monthly calendar is also sent home for easy reference in the last NewsNote of the month. An upcoming calendar section is also on the front page of our NewsNote.
	Cameras	For the safety of everyone on campus, our school is monitored with closed circuit cameras. Footage can be reviewed for any reason by administration.
	Cell Phones	Students are not allowed to use cell phones during the school day, and they must be turned into their homeroom teacher each morning. In the event of an emergency, students may be permitted to utilize the phone in the office. Forgotten homework, athletic equipment/P.E. clothes or musical instruments do not constitute as an emergency.
	Christian Witness	Each month one student per class is chosen to receive the Christian Witness Award. This award is in recognition of a student who has embodied our vision of being "... a visible example of Gospel living".
	Class Parties	Many of our classrooms are Peanut/Tree Nut safe. This means there are to be no home baked goods brought into the classroom. Any food treats must be prepackaged and indicate that they are safe. This includes any/all candy for holiday parties. All items will be checked and approved by the nurse &/or office staff before being allowed to go to the classroom.
	Clubs	We offer a variety of different clubs which will be indicated during morning announcements and in our weekly NewsNote.
D	Dances	Dances are open to our middle school students (gr 6-8) & area catholic schools only. Watch for flyers & information in the NewsNote.
	Dismissal Procedures*	Safety is ALWAYS our top priority! - Pre-K dismisses at 1:50 via doors 5 & 6. There should be NO turning around in any of the driveways along the side of the school building when lining up at door #5. Drivers must pull all the way around the main lot to get into the pick up line. - Kindergarten-Grade 8 walker/parent pick up begins at 2:30. It will occur at our Parish Center Doors (#11). - Please be prepared to show identification until such a time as the teachers are able to recognize you.
	Drop-Off Procedures*	If you are dropping your child off in the morning for school please use the following protocol in an effort to keep EVERYONE safe in the parking lot: #1 as you come onto the property continue ALL THE WAY DOWN the drive and pull into the parking lot near the church (just beyond the recycle bins). #2 The section of parking lot closest to the school is ONE WAY and is used for EXITING only! #3 When dropping off your child please pull into the first lane. Students are asked to be on the passenger side of the car to allow for a temperature check by school staff. Staff members are positioned at the front of the building to assist in making sure your child is safe moving through the parking lot. #4 Pre-K Drop off begins promptly at 8:00 at doors 5 & 6. NO Pre-k students should be dropped off at door #1 between 7:30 - 8:00. #5 The same rules that apply on the street apply in our lot: DO NOT pass a bus with its red flashing lights engaged. #6 If you have ANY need to leave the drivers seat you MUST park in a regular spot and do what you need to do/walk your child(ren) to the door. No parents will be allowed to accompany their child into the building. We will have staff outside during the drop off & dismissal times ensuring rules are followed. SAFETY IS ALWAYS OUR TOP PRIORITY!

ABC's of SME

E	Email	Email is the best mode of communication between you and your child's teacher.
	Excuse	Students who are absent are required to submit a written note signed by a parent/guardian to their homeroom teacher on their first day back to school.
	Early Dismissal Days	Any/All early dismissal dates are indicated on the annual calendar. Cheektowaga & Alden districts DO NOT provide busing on early dismissal days.
F	Faculty & Staff	A complete listing of SME faculty & staff can be found on the SME website.
	Fundraisers	The support of our various fundraisers ensures the ability to do and provide all that we can for our students! Information regarding all fundraising efforts will be in our NewsNote. We encourage you to participate in any way possible!
G	GYM*	All students, pre-k through 8th grade attend gym class. Students in grades 6-8 are required to change for gym class. Students in grades K-5 will wear their gym clothes on their scheduled gym days.
H	Handbook	Our Parent/Student handbook will be published and distributed in the first weeks of school. The last page is to be signed and returned. We will also publish it on our school website for easy reference.
I	Ice Cream*	Catholic Schools Week is the first week of February. At the conclusion of Catholic Schools Week we celebrate with an ice cream social and spirit games back here in the school. It is a wonderful time and we encourage you to join in on the fun! *This event is TBD based on COVID guidelines at the time.
J	Join	Encourage your child to join a club, sport or extra-curricular activity!
K	Keep in touch	If at any time you have any questions/concerns please reach out! We are here for you and are happy to assist in any way possible.
L	Lockers	Lockers are issued to middle school students only. Locks are suggested but not required. Destruction of property is a punishable offence (included but not limited to scratching anything into the paint on the lockers)
	Lost & Found	Located in the cafeteria, all unclaimed items will be donated at the end of each marking period. A reminder will be made prior to the end of each marking period to have students go through the items before they are donated.
	Lunch*	We are proud to offer a delicious hot lunch program! This is available to all students Pre-K through 8th grade. Lunch is \$3.50, with milk and assortment of snacks available a la carte. Lunches are prepay only. A lunch menu will go home with the NewsNote the week before a new month begins and will also be available on our website & through the parent portal.
M	Main Office*	Visitors to the building will be limited to personnel providing therapies (such as speech) to students. No other visitors will be allowed into the main office/school. Students who are late or leaving early will sign in/out from the main office. Messages from home, forgotten lunches and schoolwork can be brought to the main door #1 and office personnel will meet you there to collect any items.
	Mass*	Each class is assigned to and serves (singing/reading/ushering) at masses throughout the year. We will once again be attending mass in the church. In the event of live streaming, all students will be participating with the service as if they are in the Church celebrating.
N	Nurse	We have a nurse on staff through the district of Lancaster, with her office located in the main office. If your child becomes ill during the day they are able to come down and she will determine if they are able to return to class or must be picked up. All medications must be kept with the nurse.
	Non-Uniform Days	At various times throughout the year we host 'For a Cause/Donation Days' as dress down days. Students should adhere to the uniform policy regarding appropriate attire.
O	Online	All the information you need throughout the year is available on our website smeschool.com. Our weekly NewsNote is also posted to our website as well as emailed to every family.

ABC's of SME

P	Parking Lot	We cannot stress enough the importance of adhering to the parking lot traffic flow as indicated in the drop off directive. SAFETY IS ALWAYS OUR TOP PRORITY!
	Parent Group	The Home School Association (HSA) is our parent group which runs a variety of events/fundraisers throughout the school year. As a parent, you are already a member of the group. If you are interested in joining the team leaders please contact hsa@smeschool.com. Hands are always welcomed & needed throughout the year.
	Parent Portal	We utilize eSchool for our K-8 students. Parents have the ability to view their child(ren)s gradebook, progress & report cards at any time via the parent portal. You can access the eSchool website through the link available at the bottom of the main page of our website.
	Parent Teacher Conferences*	Please keep your eye on the NewsNote for more information on the format for Parent/Teacher conferences. Conferences will be held in November as indicated on the annual calendar. If at any time you have any concerns about your child(ren) please contact your teacher. Meetings can be set up if/as needed.
	Photographs	Inter-State Photography will be offering both fall & spring photos. All students will be photographed in the fall for our yearbook. Spring photos will only be taken of those students who have purchased a picture package. All photo dates are indicated on the annual calendar.
	Point of Contact Parent	Under the guidance of our HSA, Point of Contact (PoC's) will be the parent who communicates HSA related news and requests to the class. Although not allowed in the building, they can still offer assistance to the teacher in planning class parties and spearhead the hosting of a one time teacher/staff luncheon per grade level. Information will go out at the start of the school year to sign up. More information will come on this new role and how to volunteer for your child's class.
	Progress Reports	All progress & report card uploads are indicated on the annual calendar in purple.
Q	Questions	If at any time you have any questions/concerns please reach out! We are here for you and are happy to assist in any way possible. The main office number is 683-2112.
R	Report Cards	All progress & report card uploads are indicated on the annual calendar in purple.
	Riding the bus with a friend	Students wishing to ride the bus home with a friend must have a note from both parents (the sender & the receiver). It is the policy of each school district that they cannot transport a student outside of their district. For example: You live in Lancaster & your friend lives in Depew, the office is contacting each parent to let them know that their child will be coming home on their own bus and not to their friend's house.
	Room Parents*	See Point of Contact Parent
S	School Closings	In the event of inclement weather SME follows the closings of Lancaster Central School District. We will also post on all three local news stations as St. Mary's Elementary School. A school wide email and alert system will also be engaged.
	Security	Our doors remain locked all day. All visitors must arrive and be buzzed in at door #1 by pressing the button one time. When responding to the intercom it is not necessary to press the button to talk.
	SME Attire	We offer a SME Gear Store which will be open in each the fall and spring. Items available include: 1/4 zip long sleeve tech shirts, long sleeve cotton shirts, knit hats, baseball hats, hoodies & masks!
	Social Media	Be sure to follow SME on Facebook, we love to show off what we've got going on! We will also post important information & reminders. Not on FB? Every post we make is available on our school website, you can see the entire post without having to sign up.
	Sports*	We may offer different sports throughout the year as per the approval & guidelines offered by the state. We can & will ultimately make our decision in the best interest of the safety of our students & volunteers. All upcoming sport information will be published in the NewsNote. A valid physical must be on file with the nurse for your child(ren) to be able to participate.
	STREAM	We are very proud of our STREAM program! Students will have the opportunity to choose a STREAM academy and each Friday the last hour of the day is spent in that academy. We showcase our STREAM work during open houses & by participating in the X-STREAM games at St. Joes each year!

ABC's of SME

T	Tardy	If your child is late (arrival of 8:10 or later) they must be signed in with the main office and bring a note. If a district bus is late, no note is needed.	
	Teacher Concerns	If you have a concern with a teacher, please contact the teacher directly. Additionally, you may contact our principal via email at Kwitowskik@smeschool.com .	
	Transportation	Busing is available by almost every surrounding district. If you have any questions as to if the district which you reside in transports to SME, you can contact them directly or contact the main office.	
	Tuition	SME offers different ways for families to build their own tuition package and there are many different payment options that can be arranged. If at any time you have any questions or concerns regarding your tuition account, please contact Mrs. Jezuit. Tuition payments can be made by cash/check or credit card over the phone.	
U	Uniforms*	Our uniform policy is posted on our website, within our parent/student handbook & was included with your registration paperwork where the last page needed to be signed and returned. Masks are required to be worn and are a part of the uniform policy. Only solid color masks are permitted.	
V	VIRTUS	Every teacher, staff & volunteer (parents and coaches) must be VIRTUS certified. To find out more on this program, please contact the main office.	
	Volunteers	We love our volunteers and hope to be able to offer opportunities this year! Watch the NewsNote for potential opportunities!	
W	Walk-a-Thon	We host two walk-a-thons, one each in the fall & spring. Students are asked to dress in SME logo attire for both. Our fall walk-a-thon is apart of the Catholic Schools Marathon where schools across the area all participate. All funds raised benefit expanding technology opportunities for our students. Our spring walk-a-thon raises money for our STREAM program.	
X	eXtra eXtra, read all about it!	Stay 'in the know' by reading our NewsNote each week. We will have information about all upcoming events as well as showcasing our team sports & more!	
Y	You don't want to miss this!	We host an event just for the Mothers & Sons as well as the Fathers & Daughters. Our talent show in the spring is a wonderful showcase of the many talents of our students!	
Z	Zero Tolerance	We are a bully free zone! Should an issue arise it will be brought to the attention of the principal for appropriate action. We also have a School Resource Officer that visits the school once a week.	
Who to Contact:			
		Main Office Phone Number: 683-2112	
Principal	Mrs. Kim Kwitowski	kwitowskik@smeschool.com	ext. 124
Administrative Assistant	Mrs. Amanda Kuhn	secretary@smeschool.com	ext. 120
Director of Student Affairs	Mrs. Nancy Jezuit	jezuitn@smeschool.com	ext. 121
Nurse	Mrs. Tara Salge	salge@smeschool.com	ext. 128
Advancement	Mrs. Sheila Kierejewski	kierejewskis@smeschool.com	ext. 125
Athletics	Miss. Dolegowski	athletics@smeschool.com	
Kitchen	Mrs. Hadsall & Mrs. Fulciniti	kitchenmanager@smeschool.com	ext. 119



BUFFALO ACADEMY OF THE SACRED HEART

An all-girls, Catholic, college-preparatory high school, founded in 1877 by the Sisters of St. Francis

I hope you are all off to a good start on a new school year! I am hoping you will pass this information along to your 8th grade families (or to the person in your building who handles this outreach):

Open House is Sunday, October 17 from 10:00 a.m. - 3:30 p.m. Prospective 7th & 8th grade girls are invited to tour the school, learn about our academic and extracurricular offerings, and meet teachers, students, staff and coaches. Reservations are required and each tour can accommodate a student and two additional family members. Open House sign up [here](#).

Shadow Days will be offered beginning Monday, September 27. Eighth grade girls can spend the day with a 9th or 10th grade student based on her interests or someone she knows. We are limiting the number of shadows to seven per day. Parents can sign up for a Shadow Day [here](#).

The **Entrance Exam Prep Course** will be offered Saturdays - October 23, 30 and November 6 from 9 am - 12 noon. This three-week course is designed to give girls instruction and test-taking strategies in Math and English. The cost of the course is \$75 and includes the Petersen review book. Sign up [here](#).

The **Catholic High School Entrance Exam** is Saturday, November 20. Apply to Sacred Heart and register to take the exam [here](#).

As always, the health and well-being of the SHA community is of our utmost importance. Health screening forms and masks will be required during all events/activities inside our building. Specific information will be emailed prior to each event/activity.



ST. JOSEPH'S COLLEGIATE INSTITUTE

FALL OPEN HOUSE *for prospective students in grades 5, 6, 7, & 8*

Sunday, October 17, 2021

We will offer a Fall Open House for prospective students, but the event is pre-registration only with limited capacity. Parents may reserve an appointment at [St. Joe's Fall 2021 Open House](#).

MARAUDER FOR A DAY PROGRAM *for prospective students in grade 8*

St. Joe's will welcome Marauders for a Day (Shadows), but will limit the program to a maximum of seven (7) students per day. We are using an online system to take reservations for the program that can be found at [Register for the St. Joe's Marauder for a Day Program](#). Our staff would be happy to work with you to reserve some slots for your students, or parents may reserve a date online themselves.

ENTRANCE EXAM PREP COURSE *for prospective students in grades 7 & 8*

The St. Joe's Entrance Exam Prep Course is open to boys planning to apply to Catholic High Schools. Held at St. Joe's on Saturday mornings from 9 a.m. to noon, the 2021 course will take place on the four weekends leading up to the Entrance Exam and will feature socially distanced instruction by St. Joe's faculty members in groups of 20 or less. Parents can enroll at www.sjci.com/prepcourse

ENTRANCE & SCHOLARSHIP EXAM *for prospective students in grade 8*

All prospective members of the Class of 2026 must take the Catholic High School Entrance & Scholarship Exam on Saturday, November 20, 2021. Parents that have any questions regarding the exam may contact me directly at 716.874.4953 or pkennedy@sjci.com.



Become Part of the St. Mary's Family!

Open House

Thurs. Sept. 30th from 5 to 8 p.m.
Fri. Oct. 1st from 5 to 7 p.m.

Preregistration required at smhlancers.org
Reserve your time slot today!



ST. MARY'S HIGH SCHOOL
LANCASTER, NY

Preparing young men and women for college and beyond.